

KMT governance and formal organisation of the partnership

2025/6

Version number	1.1
Policy status	Approved
Date of issue	26/08/2025
Date of review	July 2026

Leigh Academies Trust and Kent & Medway Training

The legal entity for the Kent & Medway Training (KMT) SCITT is Leigh Academies Trust MAT.

Leigh Academies Trust is one of the country's largest and most-established multi-academy trusts operating across Kent, Medway and South East London. It contains primary, secondary and special academies and is highly inclusive and successful. Our mission is to deliver "education for a better world" by ensuring that young people in our academies have an excellent start in life regardless of their background or ability.

KMT is one of the four founding organisations of the Leigh institute, which ties together the work of the following organisations; enhancing their offer by ensuring opportunities for collaboration and mutual support:

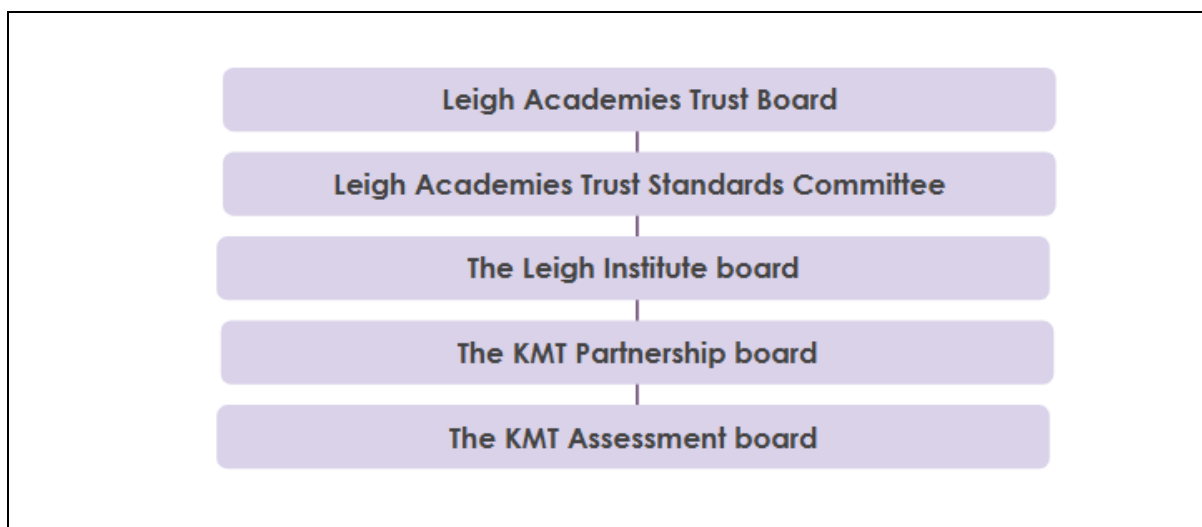
- Kent and Medway Training SCITT
- Thames Gateway Teaching School Hub
- Connected Hub Apprenticeships
- Kent & Medway Maths Hub

For nearly 30 years, the KMT SCITT has been successfully training teachers. Now KMT is one of the largest and most highly regarded School Centred Initial Teacher Training (SCITT) in the South East. We are united by our principles and our commitment to working together to achieve our mission to deliver "education for a better world".

In May 2022, KMT received confirmation of successful re-accreditation in the first round of the Department for Education's (DfE) new accreditation process. This means that we can continue to deliver our successful training leading to Qualified Teacher Status (QTS) after September 2024.

Visit the KMT website to find out more: <https://www.kmtraining.org.uk/>

The management structure of KMT:



The Leigh Institute board:

The Leigh Institute Strategic Board follows the attached [The Leigh Institute Combined SB Terms of Reference Update July 2025](#)

The Strategic Board takes a strategic lead, acting as a critical friend to Leigh Academies Trust, and is accountable for its decisions in regards to the work of The Leigh Institute. The Leigh Institute is set up to act as umbrella organisation, overseeing and collating the work of the component organisations, which are:

- KMT (Accredited SCITT)
- Thames Gateway Teaching School Hub
- Kent and Medway Maths Hub
- ConnectED Hub Apprenticeships CIC

It should set aims and objectives and review, agree and monitor policies, targets and priorities. It acts as a subcommittee of the LAT Trust Board, reporting through the Standards and Resourcing Committee structure, with the purpose of holding accountable the Director of The Leigh Institute in their strategic leadership over all organisations.

KMT Partnership board

The Partnership Board is comprised of:

- Chair
- Up to 4 KMT partners (ideally one from each region)
-

Also

- Head of KMT
- Deputy Head of KMT

Membership of the Partnership Board will be reviewed every three years. No more than three new Headteacher members should be appointed at any

one time. The group will not normally comprise any more than twelve members.

The Partnership Board will meet at least three times a year.

The Partnership Board will consider and contribute to the direction and future development of KMT. Members will play a significant role in the design and delivery of KMT's training provision; from selection and recruitment, through delivery and training, to the assessment of trainees for the award of QTS.

KMT Assessment board

The Assessment Board is comprised of:

- 4 Principals or Senior Leaders from KMT partner schools

Also

- Deputy Director of The Leigh Institute/ Head of KMT
- Deputy Head of KMT

The Assessment Board supports the KMT moderation and decision making processes to award Qualified Teacher Status to the cohort of Associate Teachers. The External Moderator's initial feedback is shared with the Assessment Board and considered prior to Assessment Unit 3. The Assessment Board will meet at least three times and more often if necessary, to fulfil its responsibilities.

External Moderator(s) for Programmes will be appointed in line with DfE criteria.

The operational structure of the KMT SCITT

